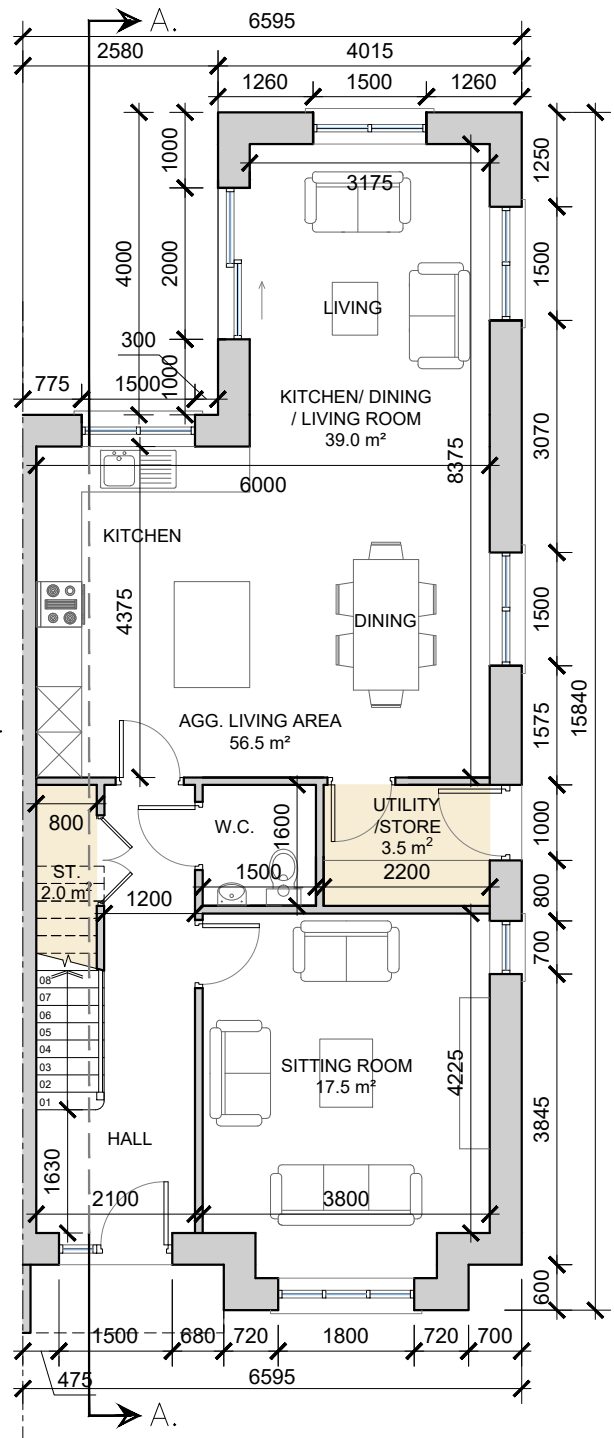


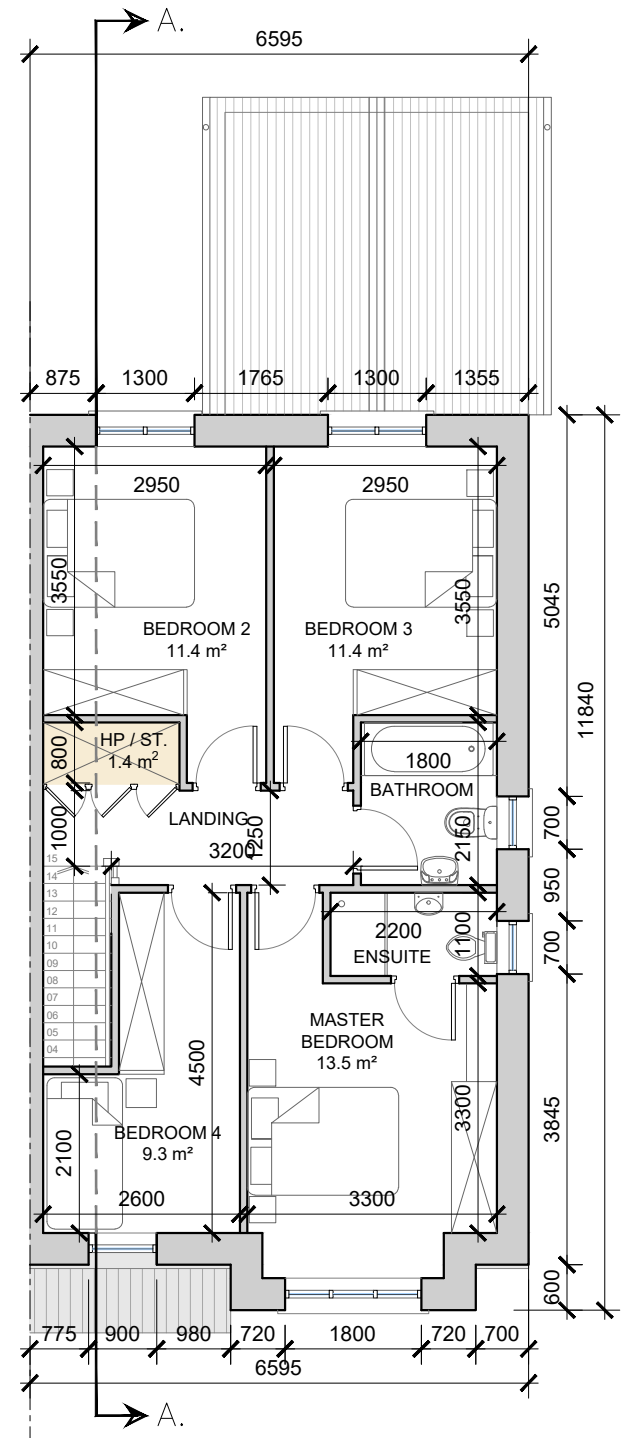
DO NOT SCALE. WORK TO FIGURED DIMENSIONS ONLY.
 ALL EXISTING DIMENSIONS TO BE CHECKED ON SITE.
 DRAWN ON AUTOCAD R2004 AT DEADY GAHAN ARCHITECTS LTD
 LAYERS ON THIS DRAWING COMPLY WITH BS 1192: PART 5

HOUSE TYPE A2(M)
 4-bed Semi-Detached (7 person)

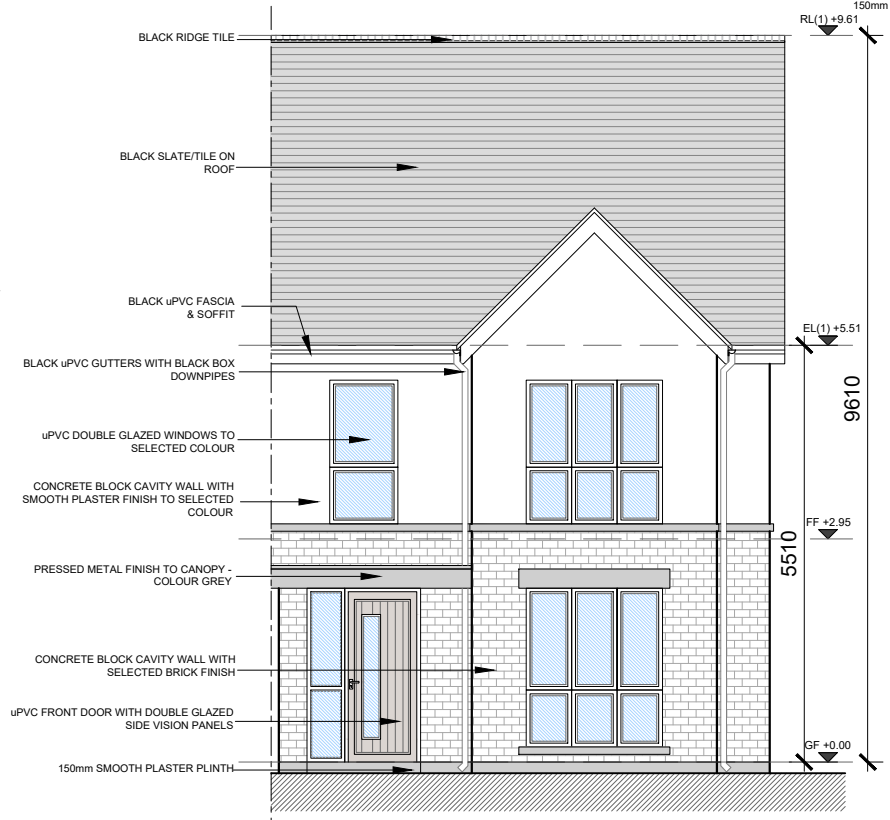
AREA: 140.3 SQ.M.
1,510 SQ.FT.
 STORAGE total - 6.9 sq.m.



Ground Floor Semi Detached
 SCALE 1:100 @ A3



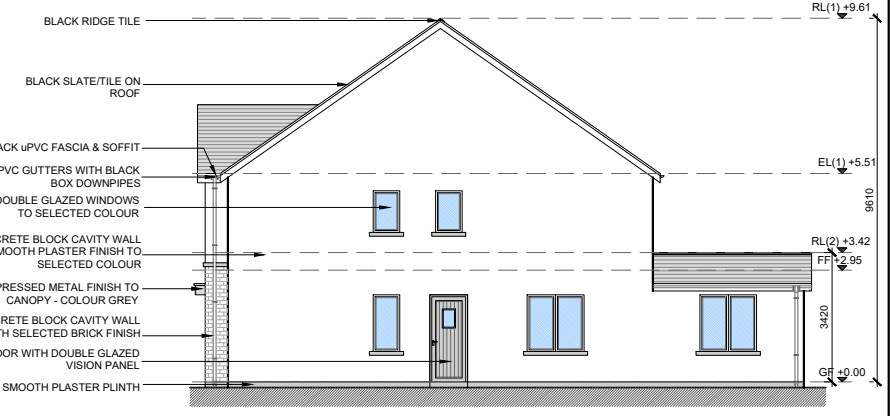
First Floor Semi Detached
 SCALE 1:100 @ A3



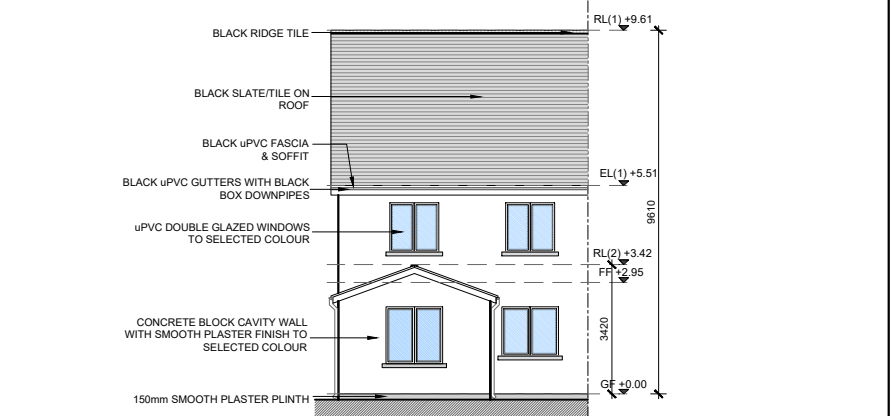
Front Elevation
 SCALE 1:100 @ A3



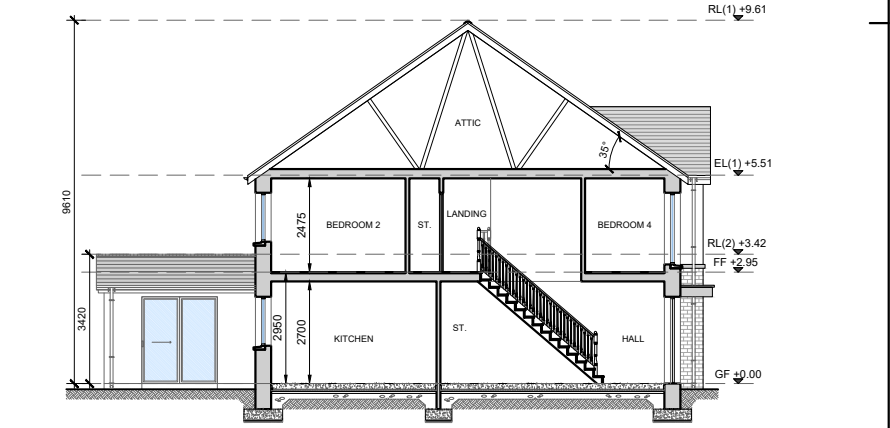
House Type A2(m) - Character Area 1
 See site plan (dwg no. 23049/P/003) for material locations



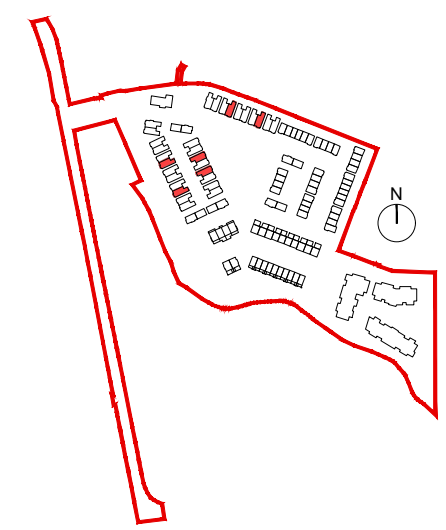
Side Elevation
 SCALE 1:200 @ A3



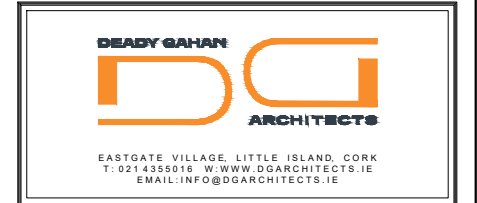
Rear Elevation
 SCALE 1:200 @ A3



Section A-A
 SCALE 1:200 @ A3



date	rev	name	chk	note
07.05.24	P1	MP	EJG	ISSUE FOR PLANNING



Project
 PROPOSED RESIDENTIAL DEVELOPMENT
 AT PORT ROAD, KILLARNEY, CO. KERRY

Drawing title
 HOUSE TYPE A2(M) - 4-BED SEMI DETACHED
 PLANS, ELEVATIONS & SECTION A-A

Scale	Drawn	Checked	Date
1:100/200 @ A3	MP	EJG	07.05.24
Project No.	Dwg. No.	Revision	
23049	23049/P/107	P1	

Information / Comments	Tender
Information / Comments	Tender
Planning	Construction

NOTE: POSITION OF NORTH POINT & LEVELS VARY.
 SEE SITE PLAN FOR ORIENTATION - DWG NO. 23049/P/003